



IJS Farm

Sample 614-082223-089

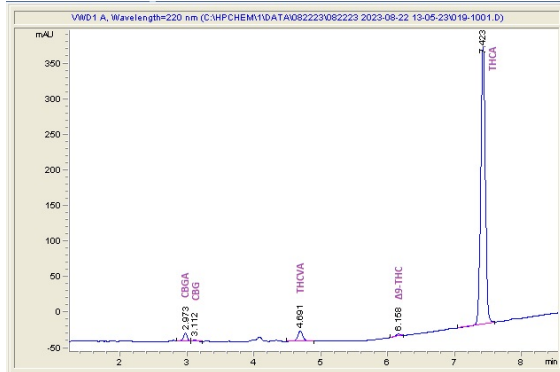
Happy Pineapple

Sample Submitted: 08-22-2023; Report Date: 08-28-2023

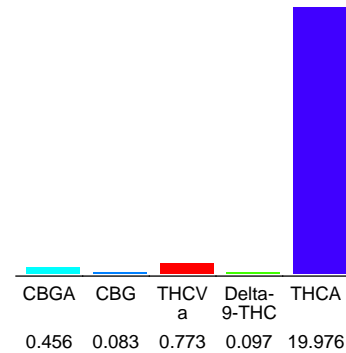
# Happy Pineapple THC-A Hemp

Plant Material: Flower

## Chromatogram



## Cannabinoid Profile



## Cannabinoid Profile by HPLC

0.10%

Delta-9-THC

0.00%

CBD

21.38%

Total Cannabinoids

Cannabinoid	% wt	mg/g
CBGA	0.456	4.56
CBG	0.083	0.83
THCVa	0.773	7.73
Delta-9-THC	0.097	0.97
THCA	19.98	199.76
<b>Total Cannabinoids</b>	<b>21.38</b>	<b>213.8</b>
<b>Calculated Total THC</b>	<b>17.62</b>	<b>176.16</b>
<b>Calculated CBD Yield</b>	<b>0.00</b>	<b>0.00</b>

Calculated Total THC = Delta-9-THC + 0.877 \* THCA  
Calculated Maximum CBD Yield = CBD + 0.877 \* CBDA

**Marin Analytics, LLC**

250 Bel Marin Keys Blvd, Suite D4  
Novato, CA 94949

833-321-TEST / info@marinanalytics.com

**Sara Biancalana**  
Chief Scientist